

Dolly Painting and Assembly Instructions

SUPPLIES

Slip- Bell Porcelain Doll Flesh

Medium- Water Silks #2 water soluble medium all purpose

Paints-Virginia LaVorna: Velvet black, Old Master's Red, Nut Brown, Deep Auburn or other eye brown shade

Rynne China: Matte White, Blue black, Air Blue or Silver Grey

Brushes: Scharff size 0 & 1 synthetic sable round (for eyes, lips, shoes and socks)

Size 10/0 synthetic sable liner

Deerfoot Stippler

Assembly Supplies: 10 gauge stranded automotive wire; #17 doll elastic (Seeleys)

Miscellaneous- Bell Ceramics china paint eraser; foam rubber make-up wedges; soft cotton knit fabric (T-shirt material)

Wig: Copper blonde mohair from EXPRESSIONS. 800 452-2480

Preparation of the Porcelain

Pour arms, legs, torso and head in Bell Doll Flesh or flesh tone of your choice. As soon as pieces are firm enough to be handled, remove from mold and trim away excess porcelain at pour spouts with a scalpel or exacto knife. Leave posts on arm and leg pieces. Carve holes in torso into which the arm and leg posts will fit when doll is assembled (fig. 1). Carve holes in the top of the head and at neck opening in head and torso (fig. 2 & 3).

Moisten the tip of a round wooden tooth pick with water and using a gentle twisting motion, make holes through the posts for threading elastic. Study the illustrations to determine the correct

placement of the holes (fig. 4 & 5).

Refine and clean greenware as usual.

Fire to cone 6.

Sand, scrub and rinse all parts allowing them to dry thoroughly before painting.

Painting: All pigments should be thoroughly mixed with Water Silks #2 to a creamy pudding consistency.

First Firing: Coat porcelain parts with Water Silks #2. Wipe with soft cotton knit cloth (T-shirting). Apply a light blush of Old Master's Red with a small piece of a make-up wedge over all parts except the shoes and socks. Stipple paint with a small #4 Deerfoot Stippler into recessed areas such as around the nose, mouth, eyes, ears, and fingers. Wipe off excess paint with a clean piece of T-shirting leaving an even blush of color. Apply a dab more color on knees and elbows. Stipple to soften and blend. Clean color away from eyes and any that might have gotten on the "socks" with a small piece of china paint eraser. With size 1 round detail brush, paint socks and eyes with a smooth coat of Matte White. Don't be concerned with the slight unevenness of the paint. The second coat will cause this to disappear. Using Velvet Black, carefully paint shoes with a size 0 or 1 detail brush. Fire to cone 018 or 019.

Second Firing: With a small detail brush, paint a second coat of Matte White over the socks and Velvet Black over the shoes.

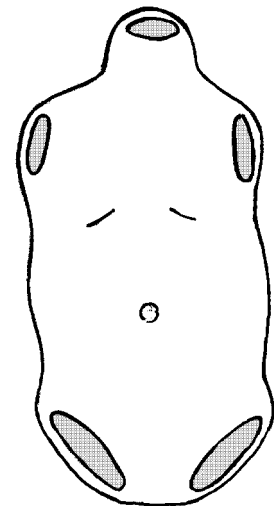


figure 1

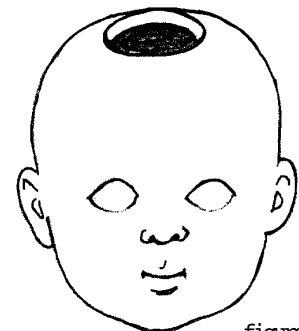


figure 2

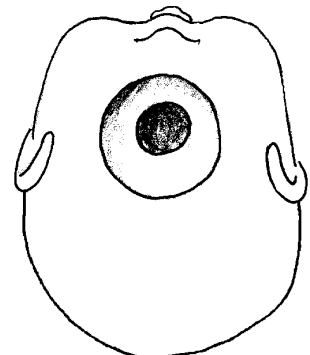


figure 3

Eyes: With a fine liner brush, paint a line of Nut Brown along the line above the eye. Stipple with a Deerfoot stippler to cause paint to form a shadow just above the eye. Draw the simple curved eyebrows with a 10/0 liner in deep auburn or eyebrow color of your choice. With a size 0 liner brush, paint a lash line following the same curve but just about 1/32" under the shadow line. With a very fine liner (10/0) tipped in Blue Black paint, draw the outline of the round iris of each eye. The tip of the circle which forms the iris should be hidden under the lash line or eyelid, as shown (fig. 6). With a small round detail brush, fill the center of the iris with a lighter shade such as Silver Grey or Air Blue. With the tip of your brush, blend the darker shade into the lighter shade around the rim of the iris. Be sure to apply paint lightly for each firing. Apply a light wash of color and do not allow it to puddle. With a touch of Velvet Black on your small round detail brush, paint the pupils in the center of each iris. Fire to cone 016.

Repeat this procedure and fire again to 016 if you would like more depth of color in the eyes. When you are satisfied, proceed with the next step: painting the reds.

Final Firing: With a fine detail brush and a touch of Old Master's Red, paint the line which forms the separation between the upper and lower lips. Carefully shape the upper and lower lips as show in figure 7. Apply a spot of color on each round cheek. Stipple to soften or blend with a small piece of foam rubber make-up wedge. Fire to cone 019.

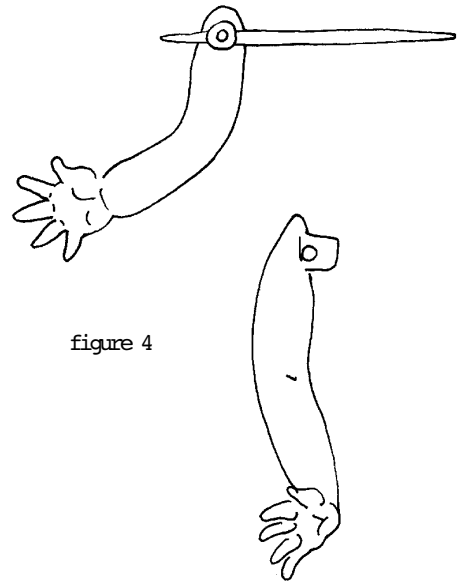


figure 4

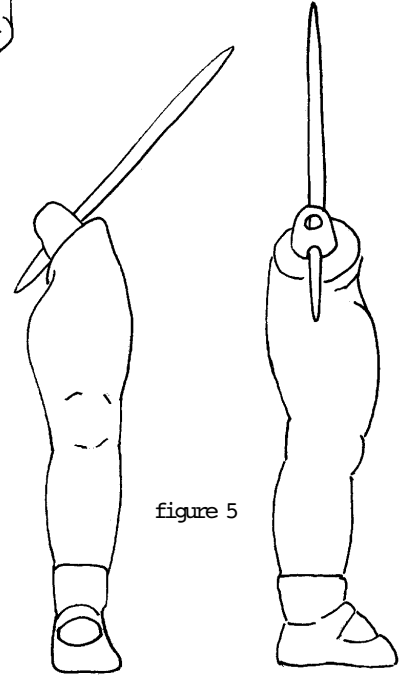


figure 5



figure 6



figure 7

Assembly

Cut a 1 inch piece of stranded #10 automotive wire and bend as shown in figure 8. Cut a 10" length of #17 doll elastic. Make a loop in the middle of the elastic and put the two ends through. Insert the bent wire through the double loop that is formed. Pull ends stretching the elastic to tighten (fig. 9). Thread the two ends of elastic through the top of the head and out through the neck opening at the bottom. Slip the bent wire into the head by working one end through the opening. Working one two elastic ends down through the torso and through the neck opening. Pull each end out through one of the leg openings. Thread one elastic strand down through the holes in one of the legs. Pull the end of that elastic out through the other leg opening. Thread the other elastic down through the holes in the other leg. Using either a square or triple knot, tie the two ends firmly stretching the elastic so that all body parts fit close to the body and will stay in place. Cut off excess elastic and tuck knot inside the body. Cut about 6 inches of elastic and string arms as shown (fig. 10).

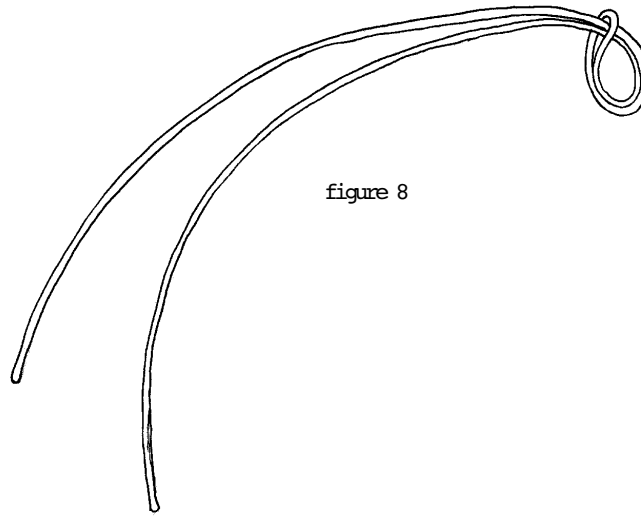


figure 8

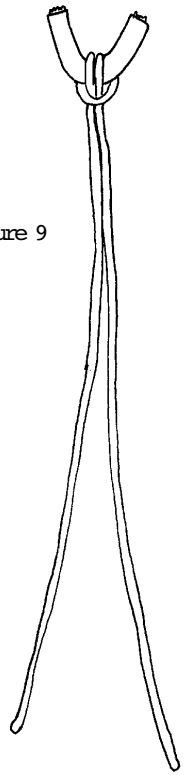


figure 9

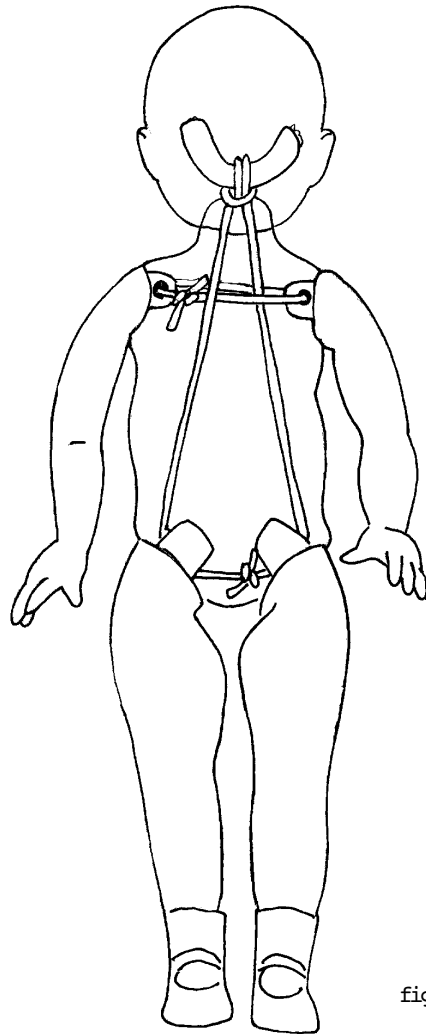


figure 10

Supply Sources

Virginia La Vorgna's
Classic Victorian Colors
2217 Loma Alta Dr.
Fullerton, CA 92663
800 222-3831

Rynne China Company
222 W. 8 Mile Rd.
Hazel Park, MI 48030
800 468-1987

Seeley's
9 River St.
P.O. Box 669
Oneonta, NY 13820-0669
607-433-1240
Fax 607-432-2042

Bell Ceramics, Inc.
P.O. Box 120127
Clermont, FL 34712
904-394-2175

Dolly

By Dianna Effner

Dolly Wig Instructions

SUPPLIES

1/4 oz Copper Blonde mohair
1" X 2" piece of nylon or thin double knit
Craft glue (Aleen's "Tacky" All Purpose Glue or Velvelette work well)
1/4" diameter plastic drinking straw
Cellophane wrap
Cardboard approx. 8" X 10"
Thread to match mohair
Spray starch (Faultless works well)
Straight pins

Bottom Curl: The curl on the bottom of Dolly's wig is made separately from the main body of her wig. This is to make the curl permanent. To make this curl, cut a rectangle of cellophane wrap approximately 4" X 6" and tape it to the center of a flat cardboard surface. Spread a thin line 2" long of craft glue (that will dry clear). Aleen's "Tacky" All Purpose Glue works well. Pull small amounts of mohair from mohair rope and spread one end evenly across the glue beading as shown in fig. 1. Press gently into glue and trim evenly across this end. Let dry. If mohair needs to be "brushed", use a long craft needle and draw it gently through the mohair weft firmly holding the trimmed end after glue has dried.

Using a 1/4" diameter plastic drinking straw (Hardee's is perfect) roll the length of mohair up as shown in fig. 1. A helpful hint: fabric spray starch sprayed on the hair helps to hold it in place. We used Faultless spray starch and it did not alter the mohair color once it dried. Be sure mohair is spread evenly along straw.

The amount of mohair used to make this curl is optional. You do not want the curl to be too thick.

Place another thin line of "Tacky" glue on top of original line of glue. Roll mohair covered straw up and press gently into glue. A straight pin pressed through each end of straw into cardboard will hold it into place (fig. 2). Set aside to dry.

Bangs: Cut a rectangle 3/4" X 1 1/4" from nylon (a used panty hose top works well). With narrow end facing you, place wefts of mohair evenly across nylon strip (fig. 3). With machine set on narrow width, stitch across mohair (fig. 3). Backstitch at beginning and end. A thin piece of paper placed behind nylon will stabilize fabric as you sew. (Tear paper away after you've finished sewing the wig body)
Fold 1/4" seam allowance under and glue (fig. 4).

Wig Body: With glued side of cap up and paper side down, place mohair wefts evenly along the length of nylon rectangle (fig. 5). Mohair should be dense enough to hide nylon, but not so dense as to bunch up when sewn. Stitch down center of nylon cap, backstitching carefully at both ends. Be sure not to stitch into bangs. If you do and a "space" occurs, you can fill it in by gluing a small tuft of mohair on the underside of the cap, blending it into the bangs. Gently tear paper from nylon. Glue small weft of mohair to back center part (fig. 5). Glue wig cap to top of Dolly's head with center stitching running down center of head. Dolly's nose makes a good center reference point.

Allow glue to dry before proceeding with styling the mohair.

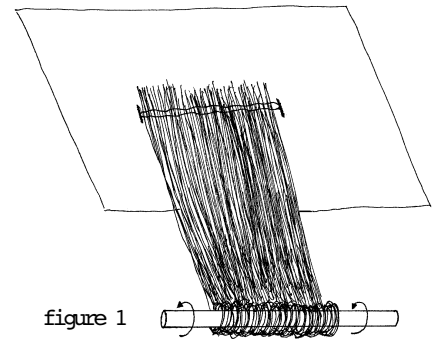


figure 1

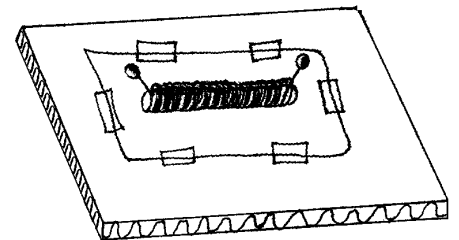


figure 2



figure 3



figure 4

Styling Bangs: When glue is dry, comb through bangs with craft needle until smooth. Lightly spray with starch and trim to 1 or 1 1/2" in length. Roll under on a 1/8" diameter plastic straw. Be sure mohair is spread evenly across the straw the width of Dolly's forehead. Hold straw in place with a straight pin. When thoroughly dry, unroll and carefully trim to desired length. Snip hair a little at a time. It's easy to cut more off—difficult to put it back!

Completing Wig Body: Mohair will need to be glued to Dolly's scalp. Note the glue pattern in fig. 6. Spread a light coat of craft glue to this area (Both sides of the head are done in the same pattern.). Draw the mohair gently down through the glue with a craft needle or Quilter's straight pin (fig. 7). The needle should only be drawn down through the hair in the direction shown in fig. 6. Hair should not be "plastered" down to scalp. Do this procedure around head until scalp is covered. Some mohair, on the surface, should still be loose. Let glue dry.

Trim hair just below the head joint (fig. 8). Do not cut this hair too short as you will be gluing your bottom curl in this area. You can go back and trim the mohair beneath the curl when glue has thoroughly dried.

Carefully remove 2" curl from cellophane wrap. Place a thin line of glue on top of dried glue line. Position curl at the bottom of Dolly's ears and along the back of her head (fig.9). Press gently into glue and hold by hand or with straight pins until glue sets. Let dry completely before final trimming.

Final Trimming: If necessary, trim hair beneath the curl being careful not to cut the bottom of curl (fig. 9)

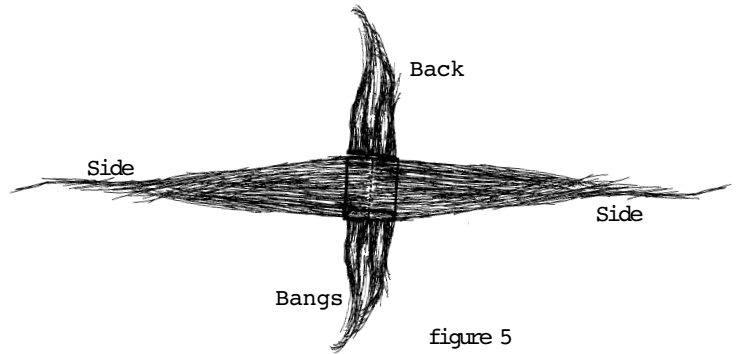


figure 5

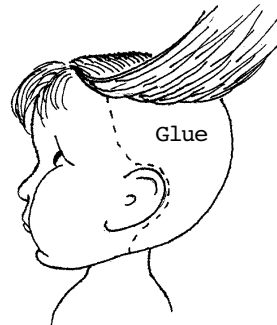


figure 6

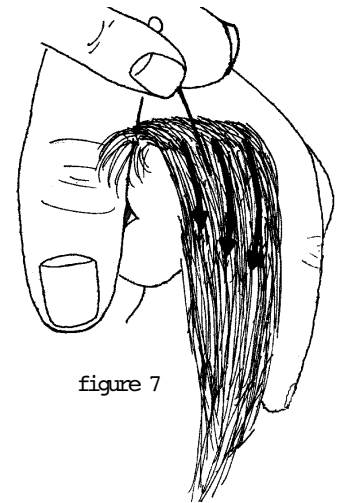


figure 7



figure 8



figure 9